



CEMENTINE

ARTIGIANALI

CATALOGO 2019





Le Cementine

RESISTENTI
REALIZZATE A MANO
INFINITI DISEGNI
COLORI A SCELTA



ORIGINI

Le cementine o pastine di cemento, sono mattonelle a più strati, nate a fine '800 dietro l'esigenza di una velocità di posa maggiore rispetto alla "veneziana" pur conservando grande attenzione al decoro e al disegno.

La parte inferiore delle cementine è composta da cemento e sabbia mentre la parte superiore "nobile" è composta da polvere di marmo, cemento bianco ed ossidi colorati. Il tutto viene colato a mano in forme e pressato.



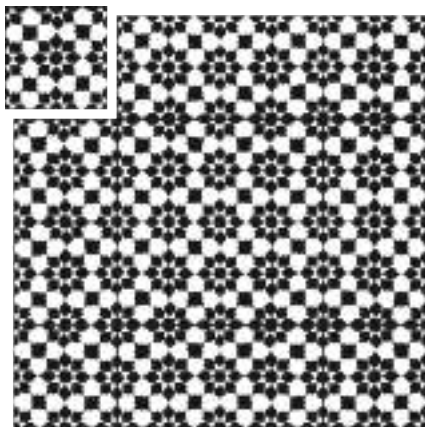
LIBERTÀ ESPRESSIVA

Con l'utilizzo di matrici si possono creare motivi personalizzati su progetto. Ogni pezzo è unico: le nostre cementine sono fatte ancora come una volta, realizzate a mano una ad una.

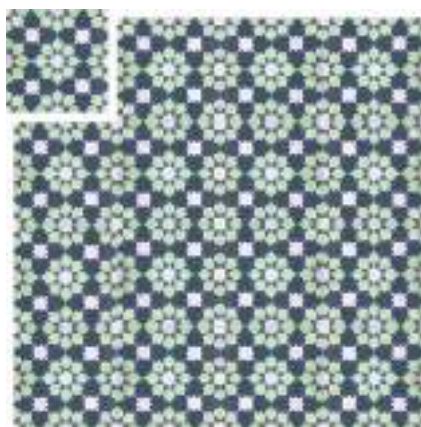
Eventuali variazioni cromatiche e dimensionali sono peculiarità ed elemento distintivo di una lavorazione interamente manuale dei prodotti.



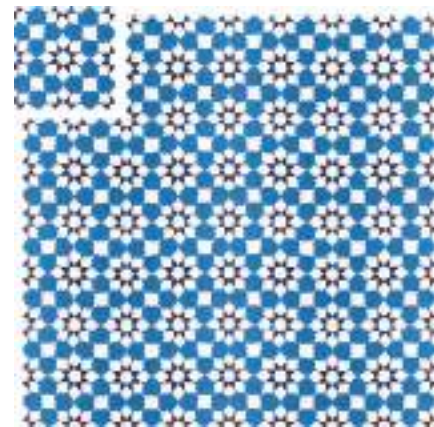
ARABESQUE



A01



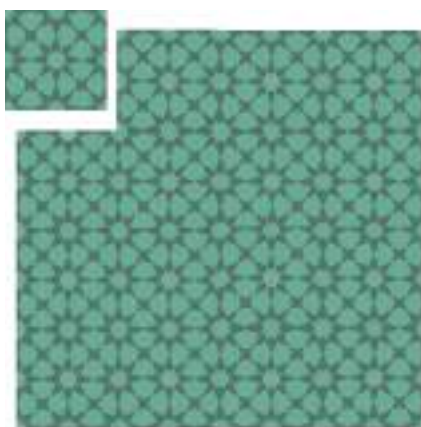
A01-1



A01-2



A02



A02-5



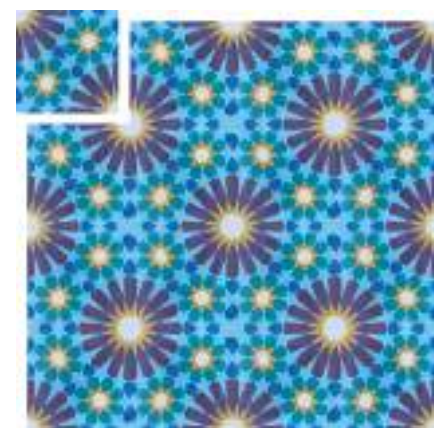
A03-1



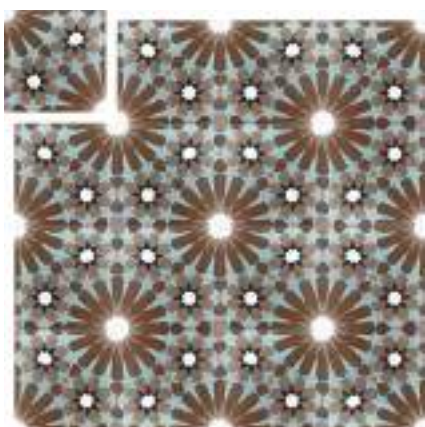
A03-2



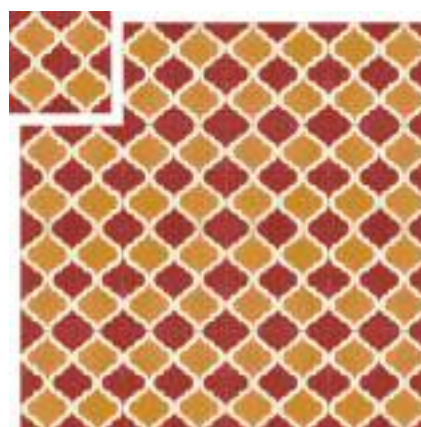
A03-3



A03-4



A03-5

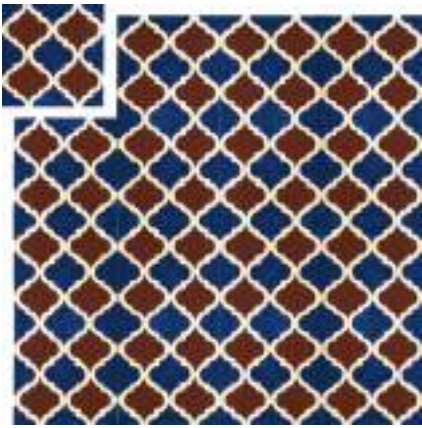


A04-2



A04-3

ARABESQUE



A04-4



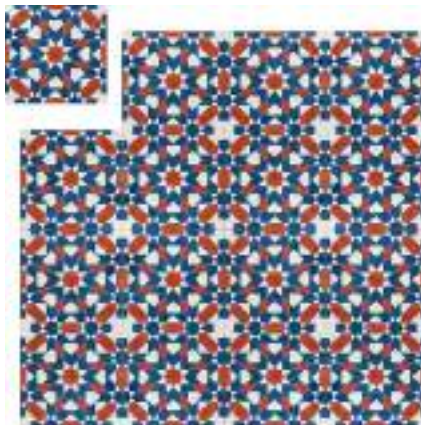
A05-1



A06



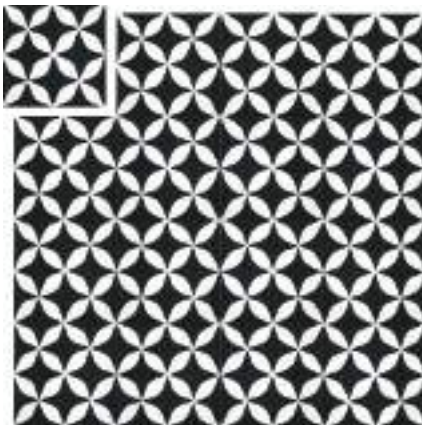
A06-1



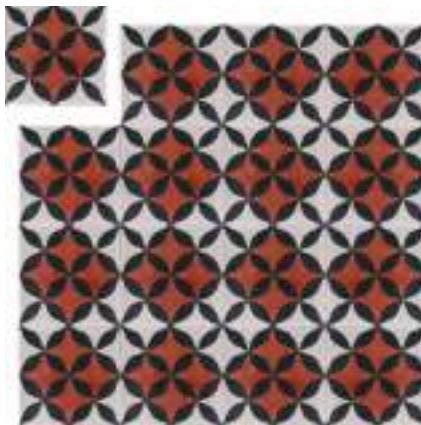
A07-1



A08-1



A09



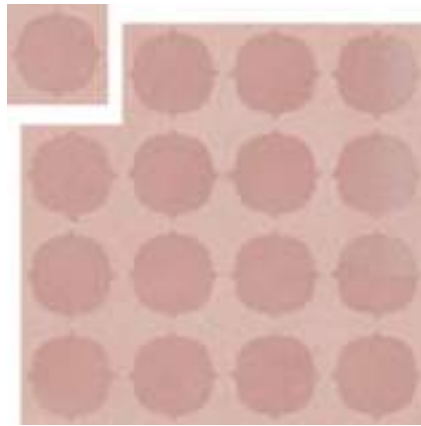
A09-1



A10



A10-1

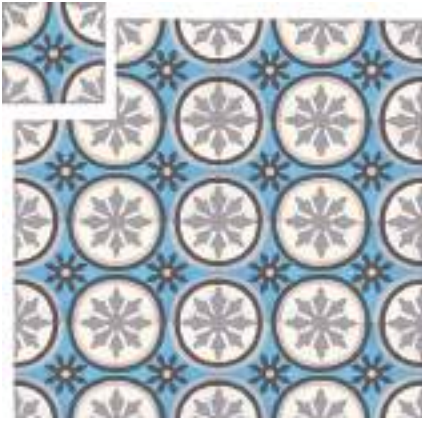


A11-1



A12

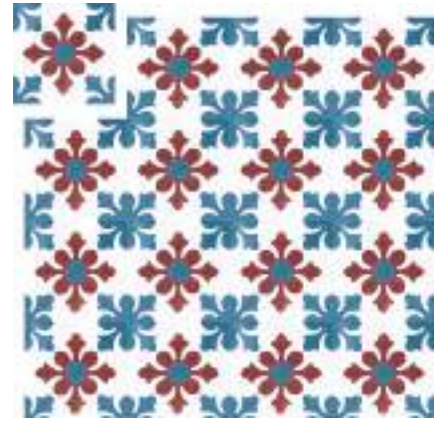
CLASSIC



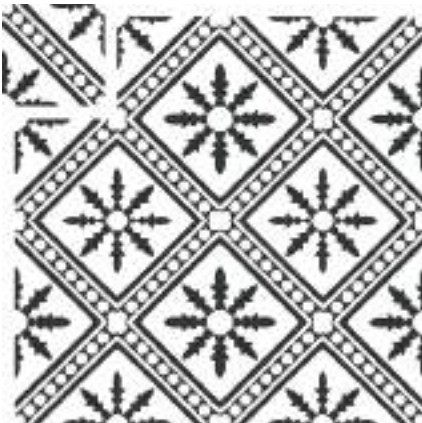
C01-1



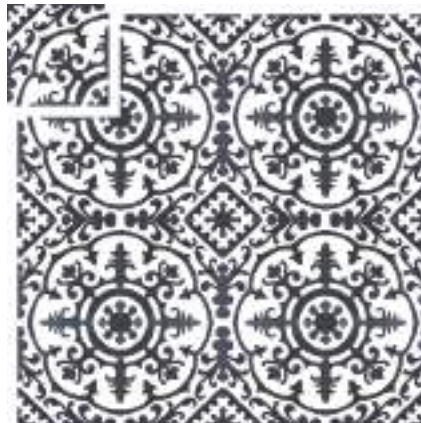
C02-4



C03-1



C04



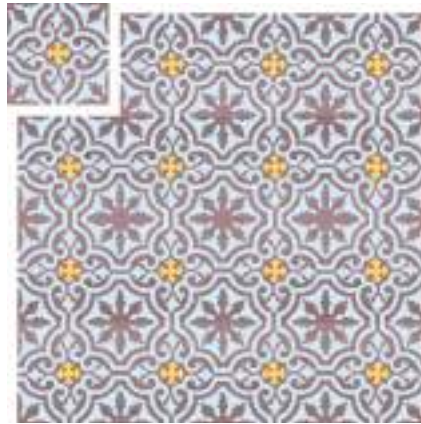
C04-1



C04-2



C04-3



C04-4



C04-5



C04-6



C04-7



C04-12

CLASSIC



C05



C05-2



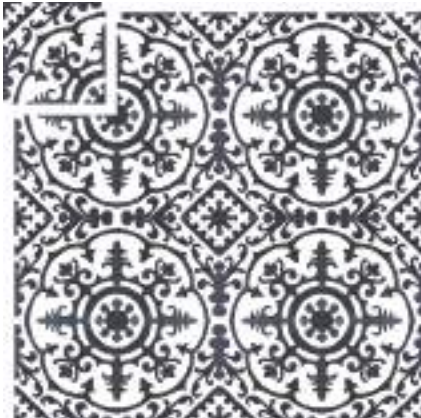
C06-1



C07-1



C07-2



C08



C08-1



C08-2



C09-1



C09-2

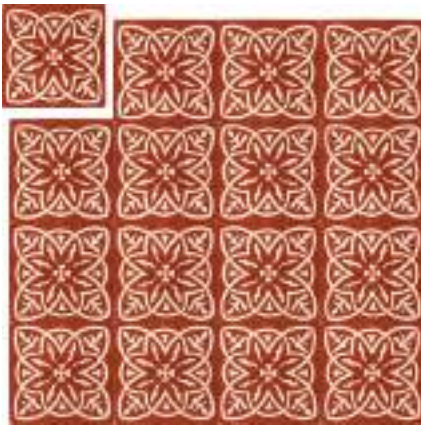


C10

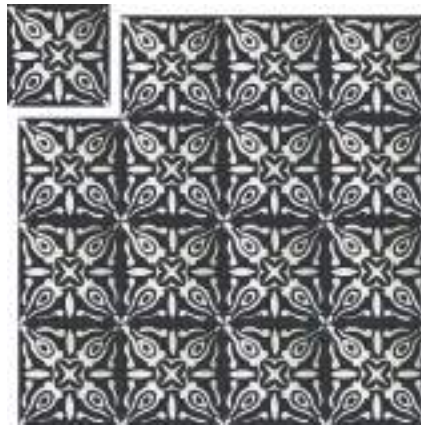


C10-3

CLASSIC



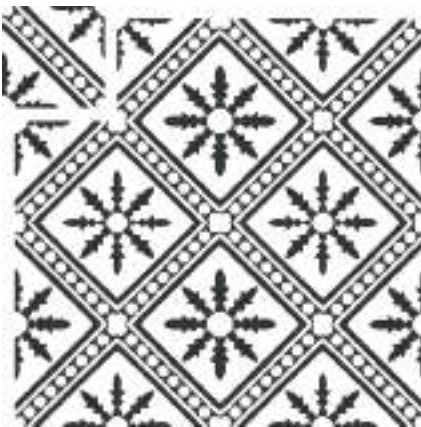
C11-1



C12



C13-1



C14



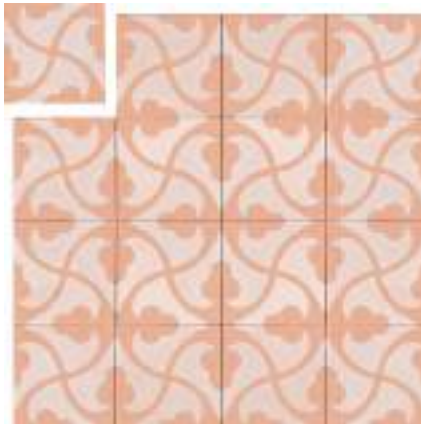
C15-1



C15-2



C16



C16-1



C17



C17-1



C18-2



C19-1

FLOREALI



F01



F01-1



F01-3



F01-4



F01-5



F01-8



F02-1



F02-2



F02-3



F02-4



F03-1

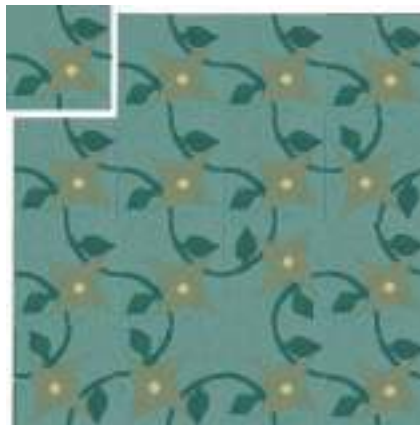


F03-2

FLOREALI



F04-1



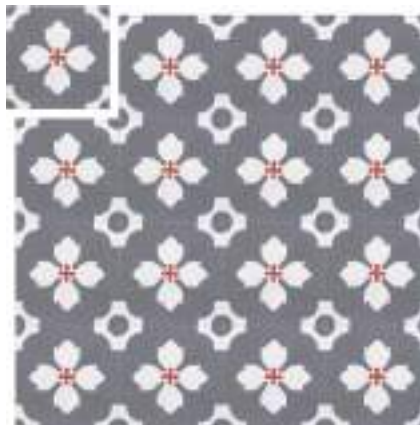
F05-2



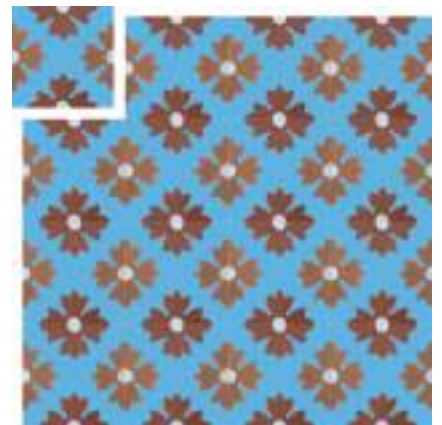
F06-1



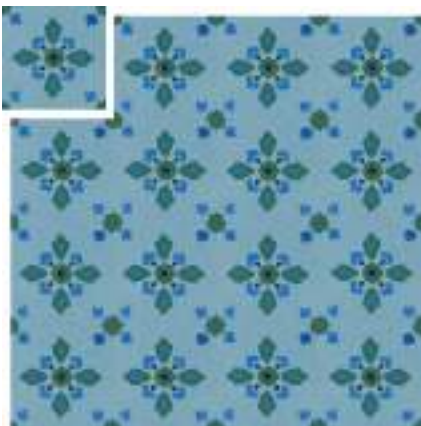
F07-1



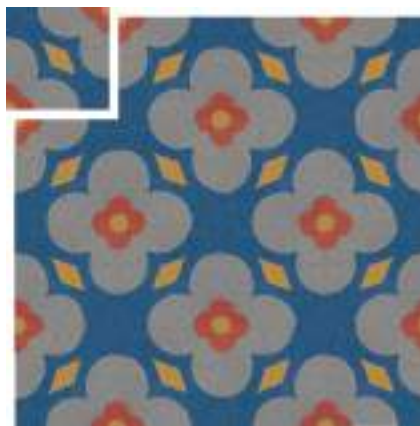
F08-1



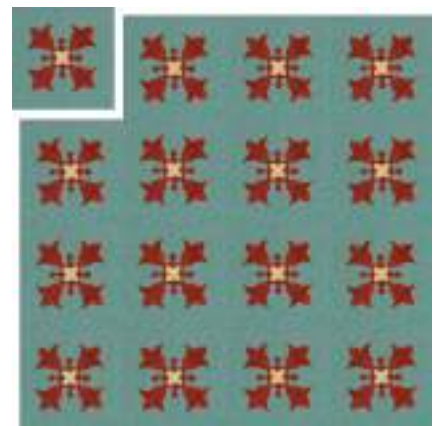
F09-1



F10-2



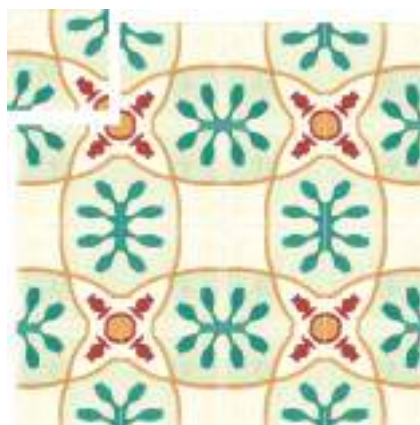
F11-2



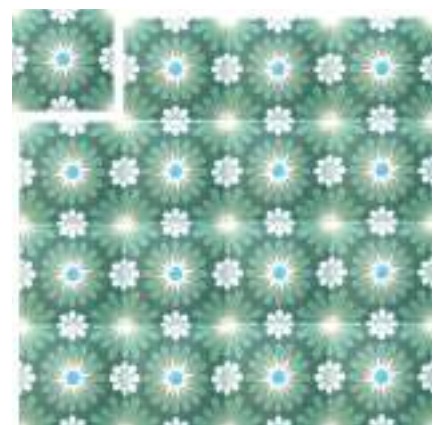
F12-2



F13-1

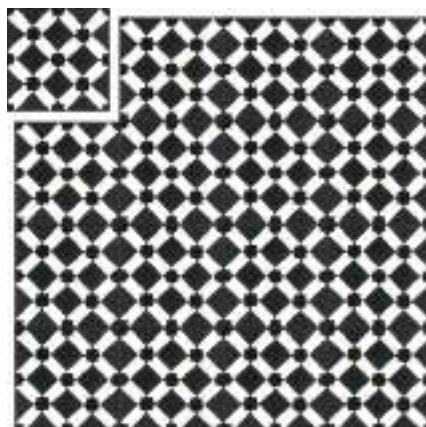


F14-1

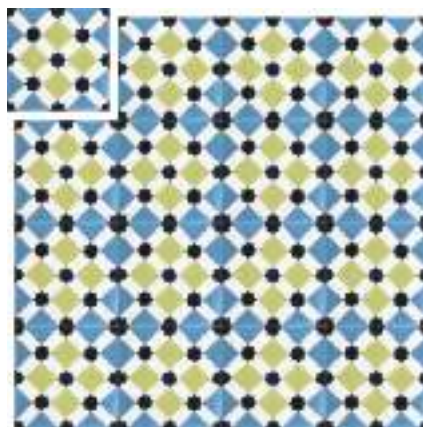


F15-2

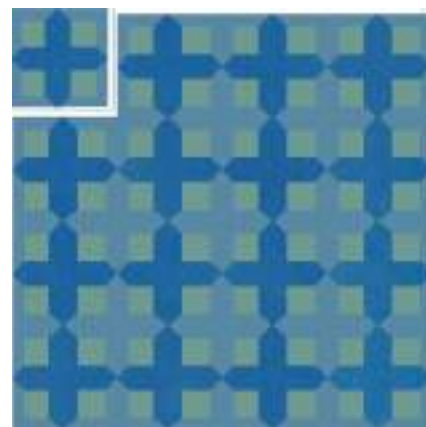
INTRECCI



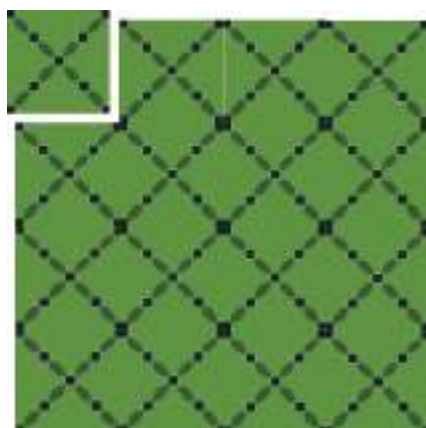
I01



I01-1



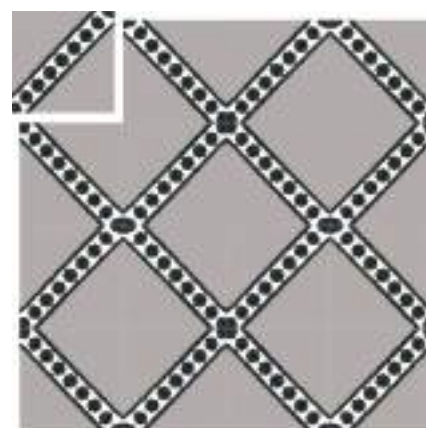
I02-4



I03-3



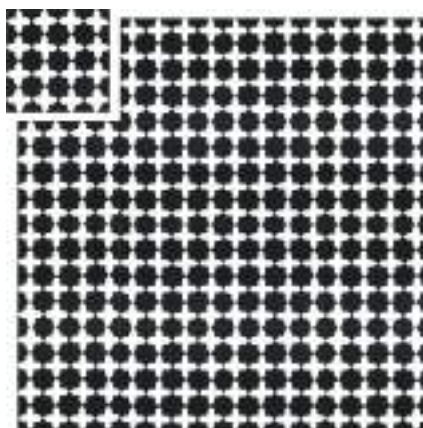
I04



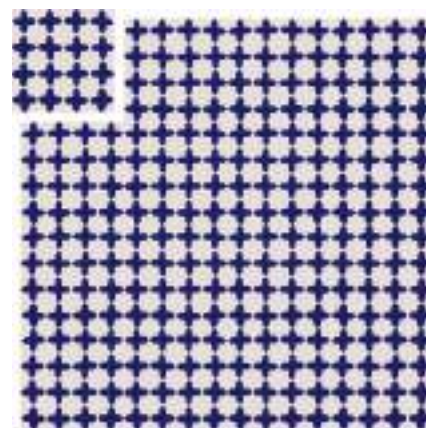
I05



I06-2



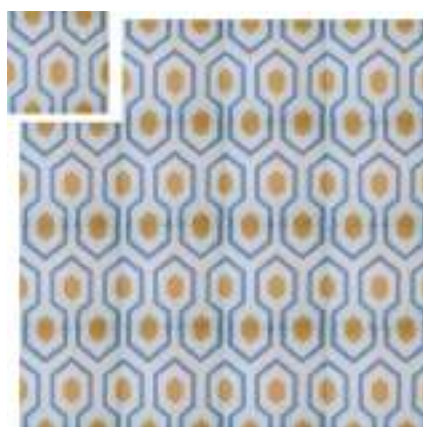
I07



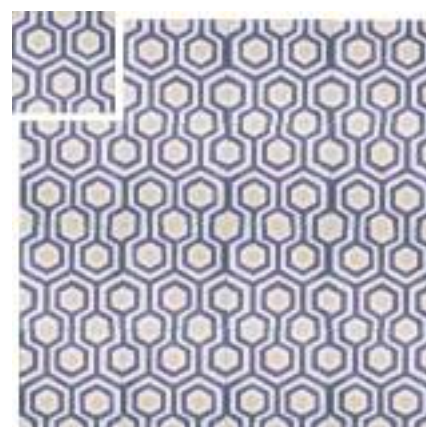
I07-1



I08-4



I09-1



I10-1

STELLE E NATURA



S01



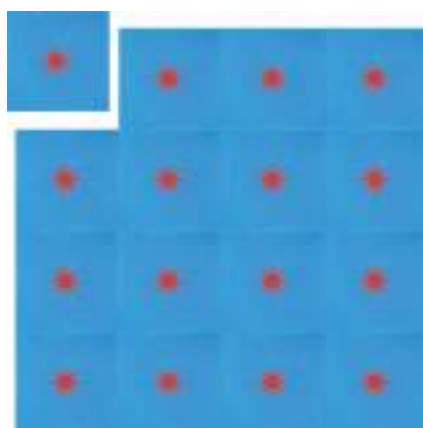
S01-1



S01-3



S01-5



S02-1



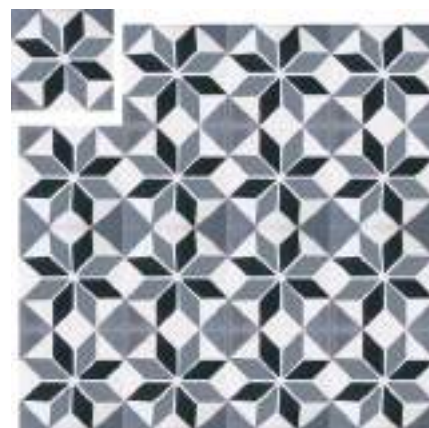
S03-1



S03-2



S03-3



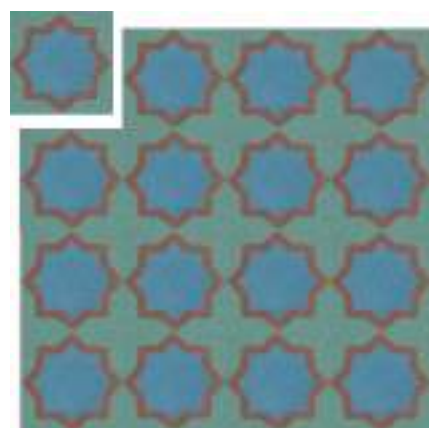
S04



S04-1

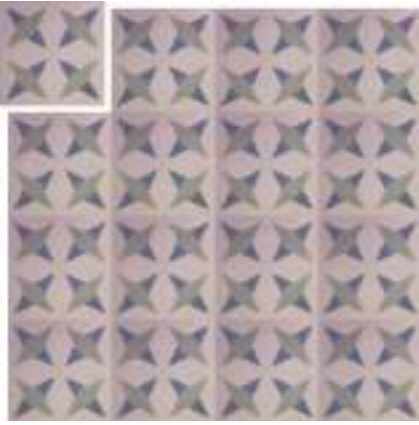


S04-2

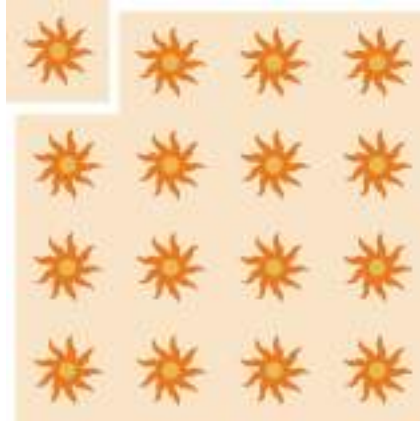


S05-2

STELLE E NATURA



S06



N01-1



N02



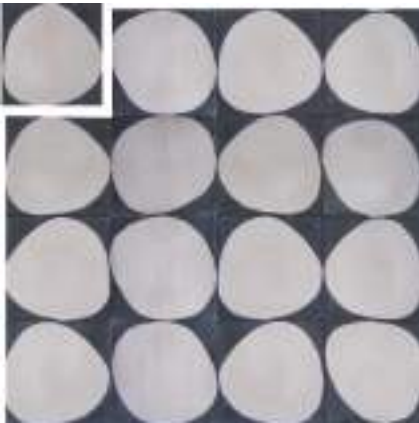
N02-1



N03-1



N04-1



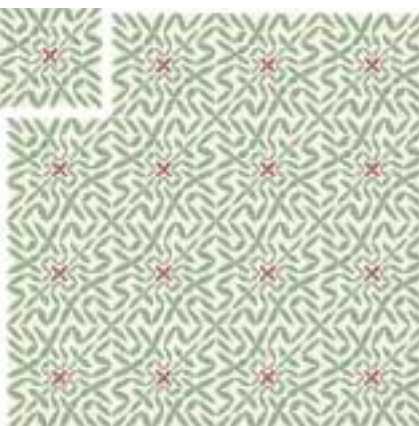
N05



N05-1



N05-2



N06-1



N07-1

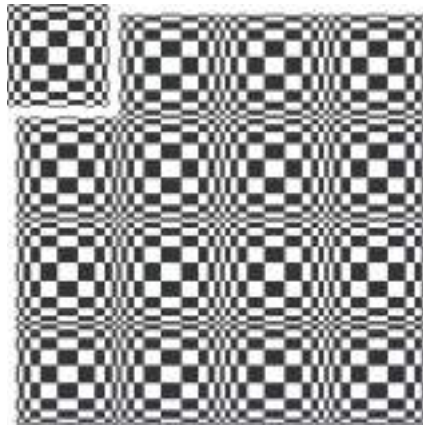


N07-3

OPTIC



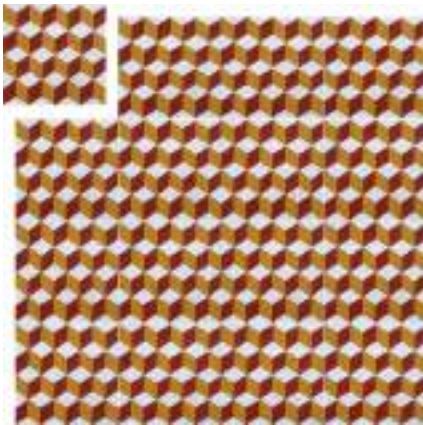
O01



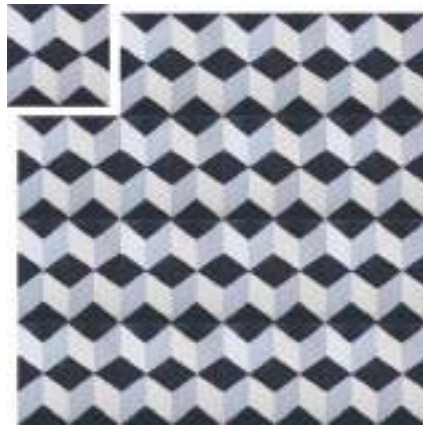
O02



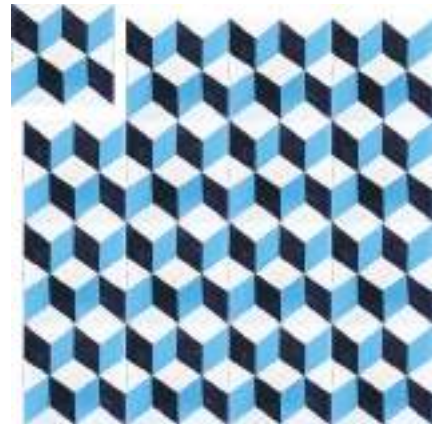
O03



O04-1



O05



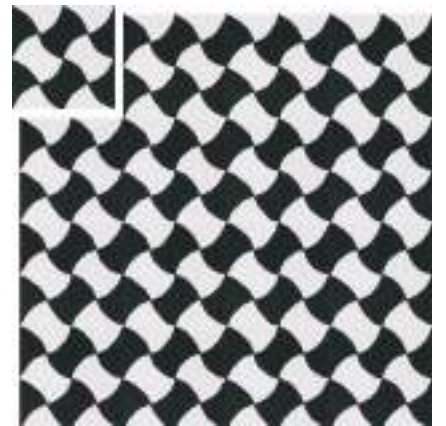
O05-1



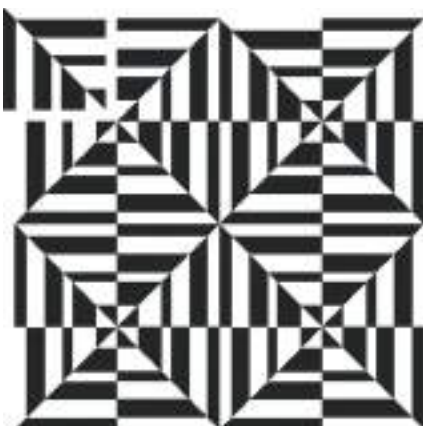
O06



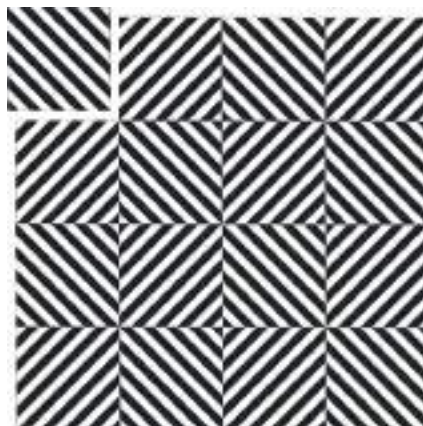
O06-1



O07



O08



O09



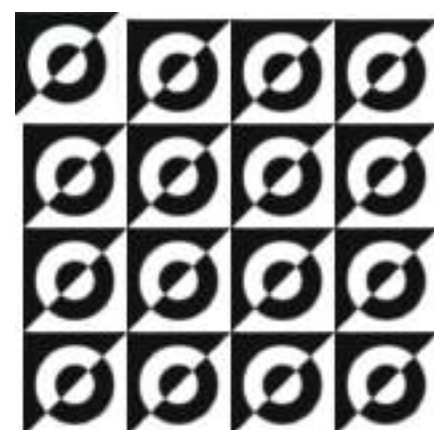
O10-2



O11-1



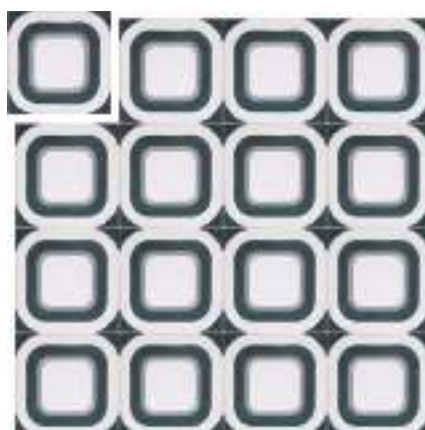
O12



O13



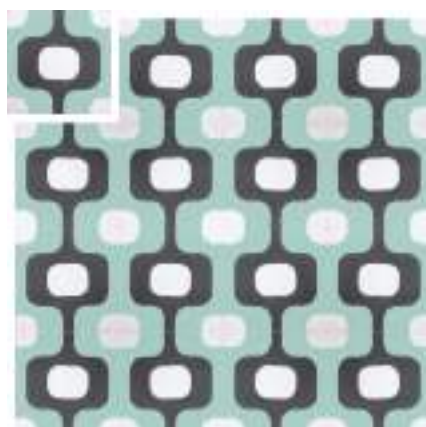
O14-1



O15



O16



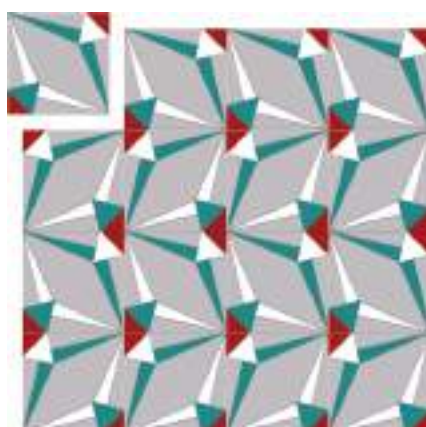
O17-1



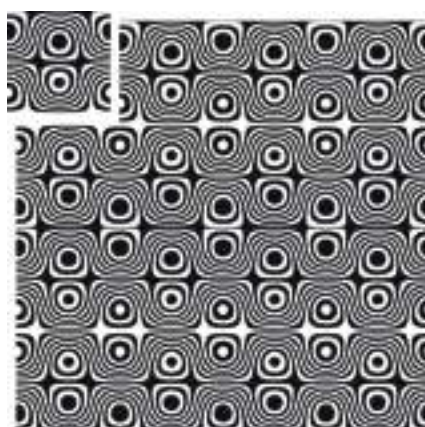
O18-1



O19-1



O20-1



O21



O22-1

GEOMETRIE



G01



G01



G02



G03



G03-1



G04



G04-2



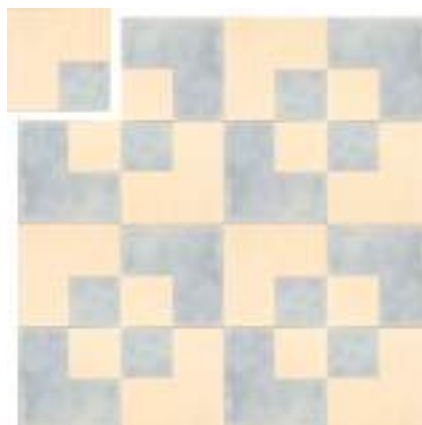
G05-1



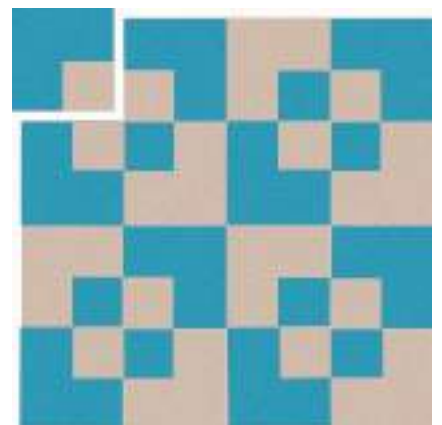
G05-1



G06-1

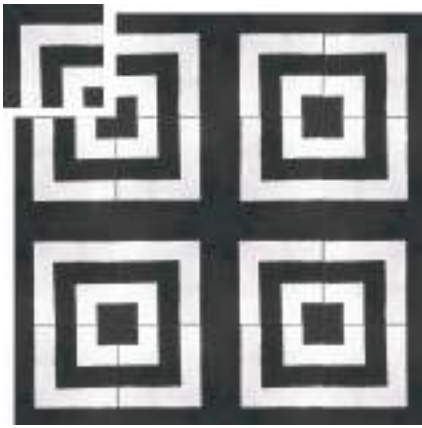


G07-1



G07-2

GEOMETRIE



G08



G08-1



G09



G09



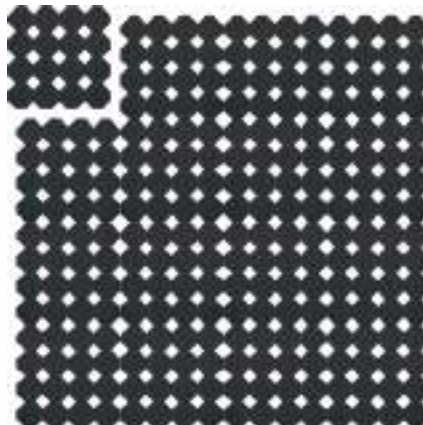
G10



G10



G11-1



G12



G13-1



G14

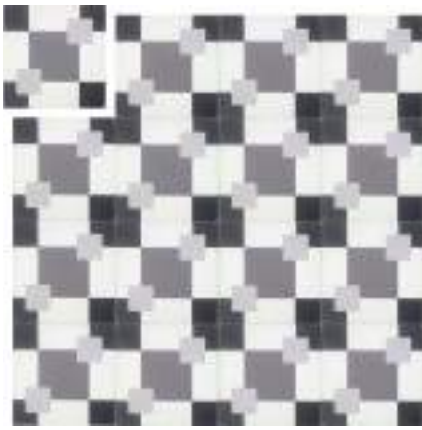


G15

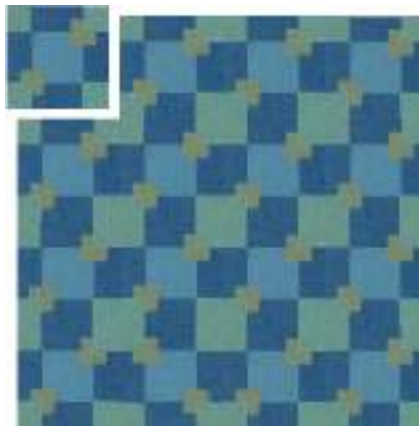


G16

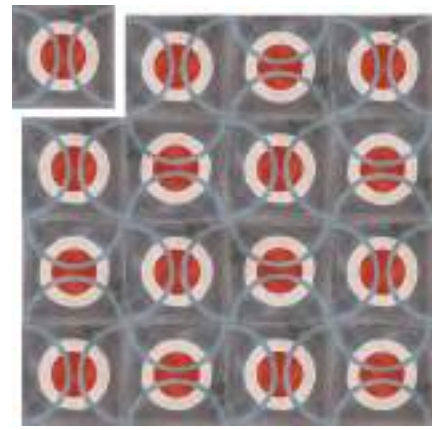
GEOMETRIE



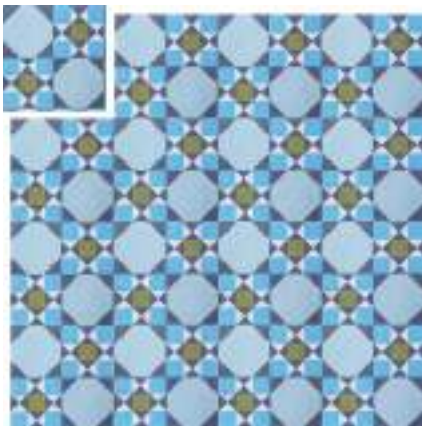
G17



G17-2



G18-1



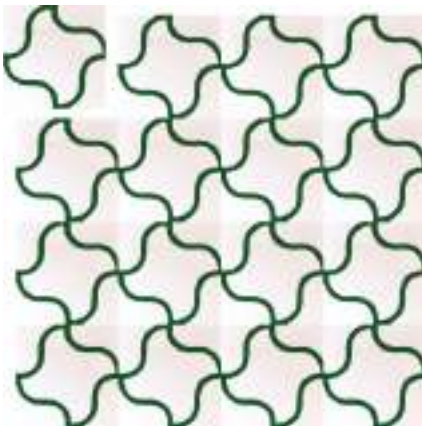
G19



G20-2



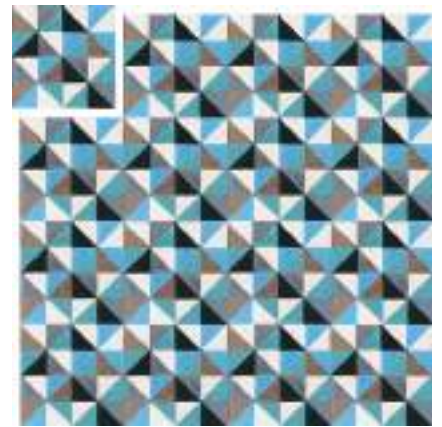
G21



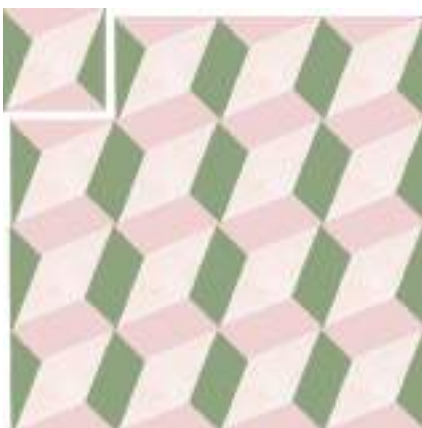
G22-1



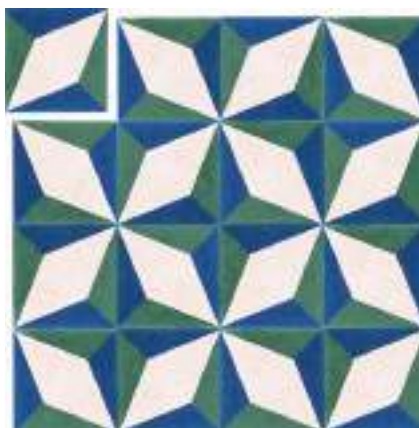
G23



G24-1



G25-4



G25-2

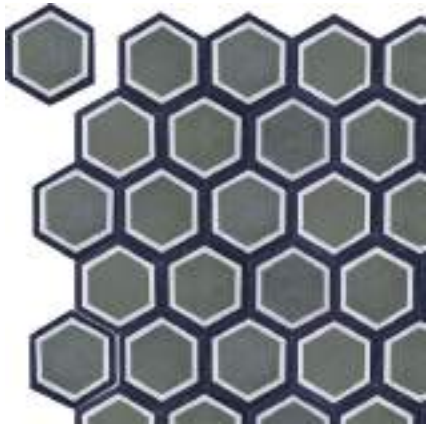


G26

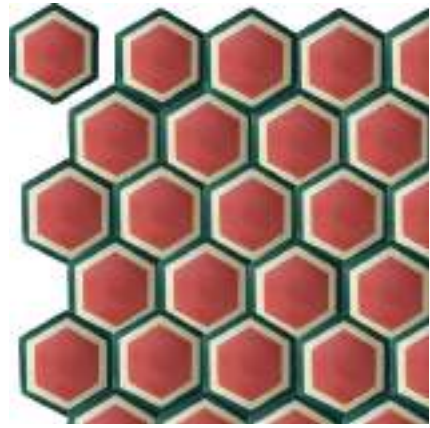
ESAGONALI



E01



E02



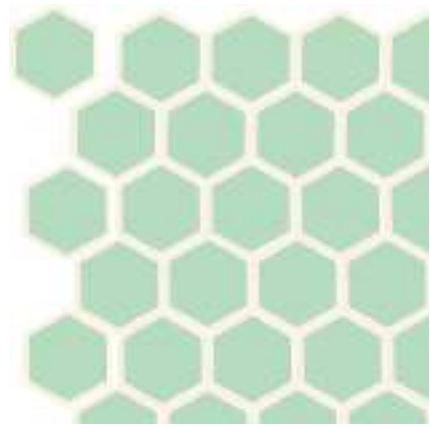
E02-4



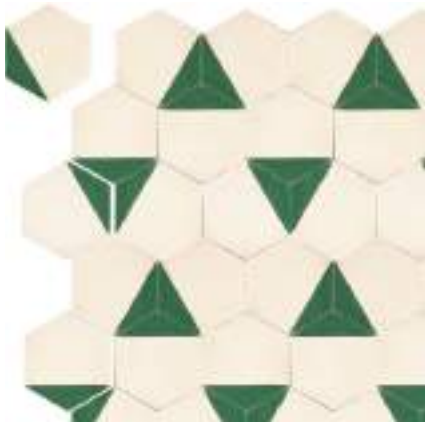
E03-1



E03-3



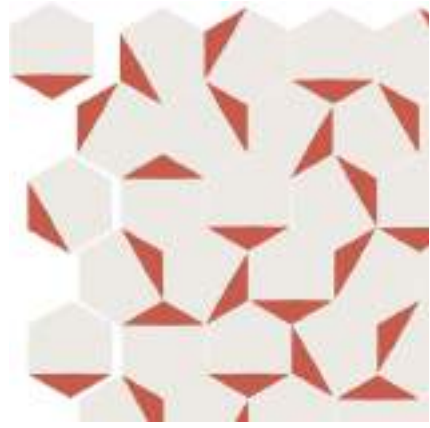
E04-1



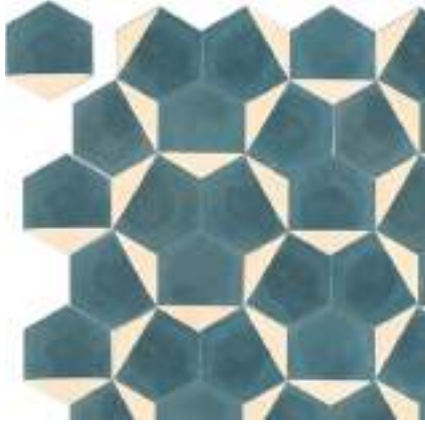
E05-1



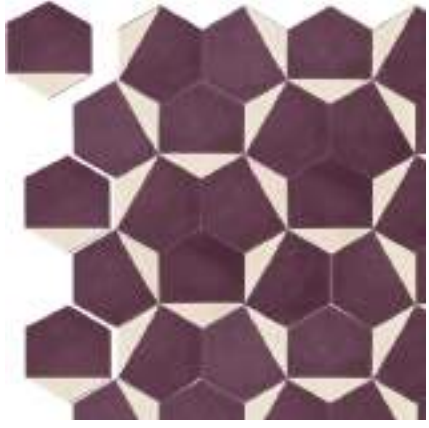
E05-2



E05-3



E05-4

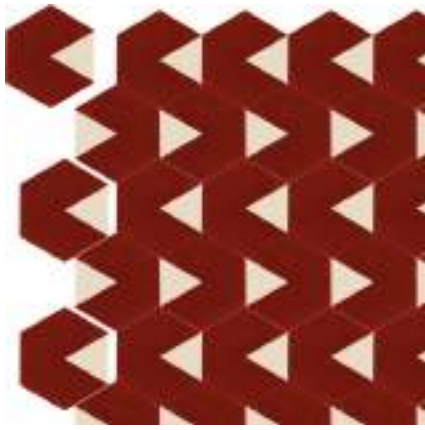


E05-5



E05-6

ESAGONALI



E06-1



E06-1



E06-2



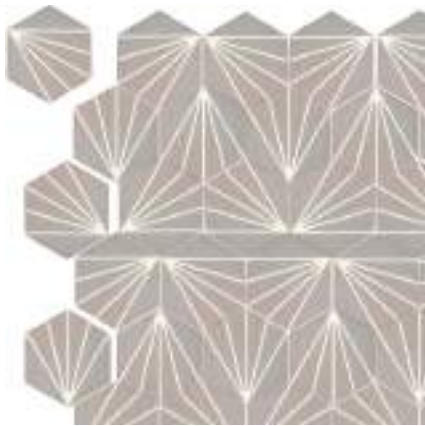
E07-1



E07-1



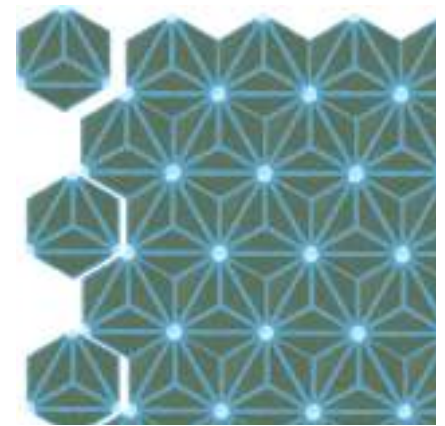
E07-1



E08-1



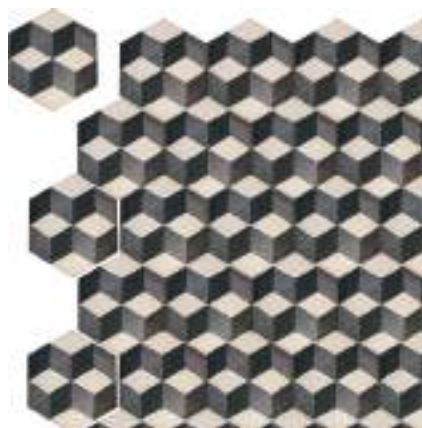
E08-2



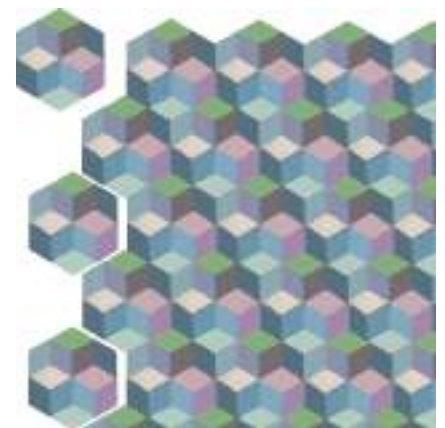
E09-2



E10-2



E11



E11-1

ESAGONALI



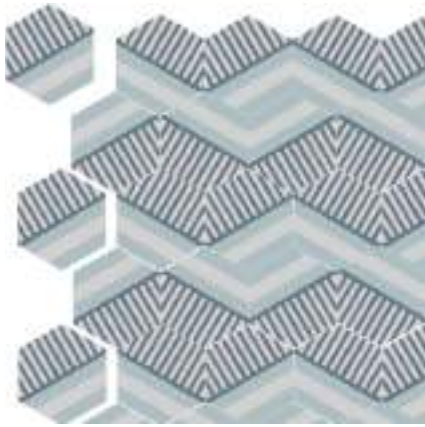
E12-1



E12-3



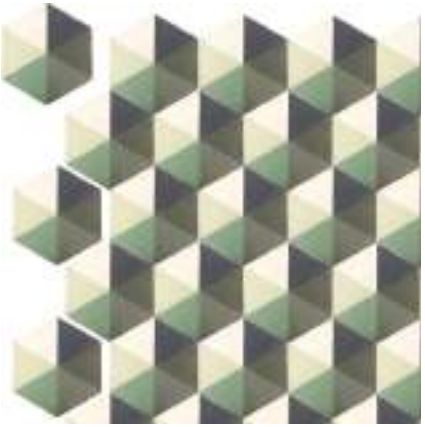
E13-2



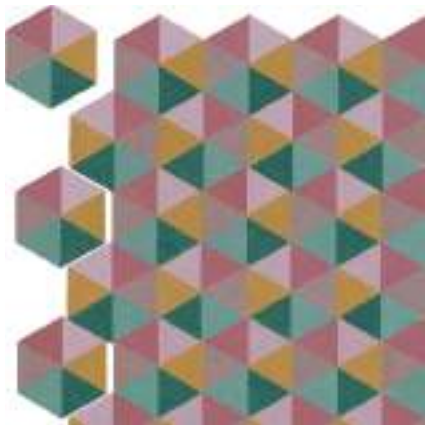
E14-1



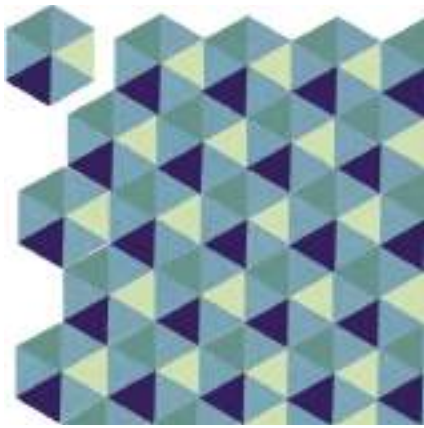
E14-4



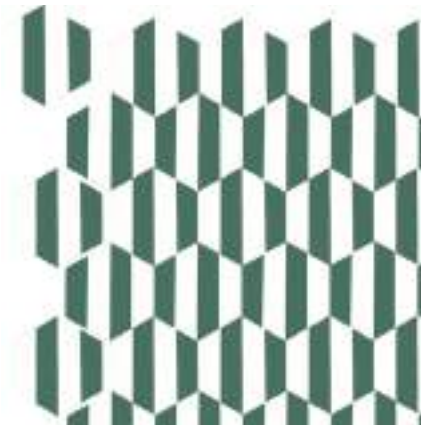
E15-1



E15-2



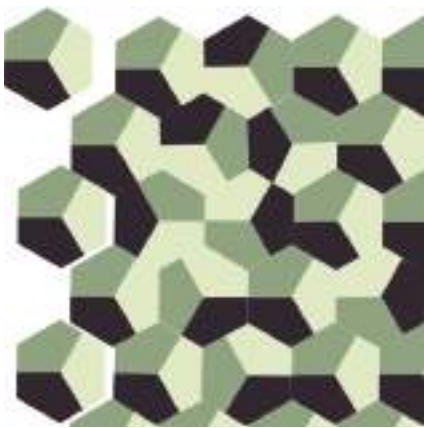
E15-3



E16-1



E17-1



E18-2



E19

BORDURE



B01-1



B02-1



B03-1



B04



B04-1



B05-1



B06-1



B06-4



B07-1



B07-2



B08-1



B08-2

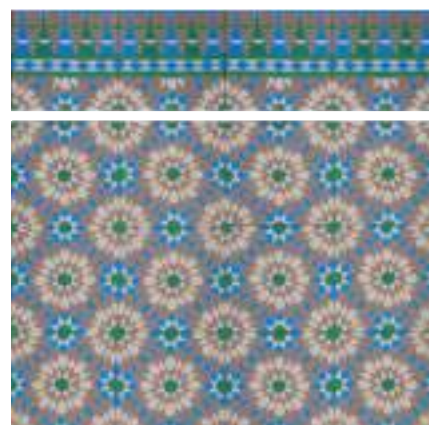
BORDURE



B09



B10 angolo



B11-1 cornice



B12-1 cornice



B13-1 cornice



B14-1 cornice

FORMATI SPECIALI



Losanga 01



Losanga 01-1



Losanga 01-2



Ottogonale 01-1



Ottogonale 01-3



Ottogonale 01-4



Battiscopa in tinta unita blu



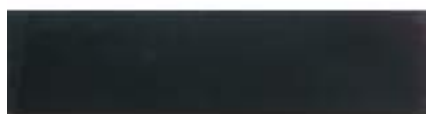
Battiscopa 01



Battiscopa 02



Rettangolo in tinta unita
10x20



Rettangolo in tinta unita
5x20 -5x10



Rettangolo con rombi
5x20

ESEMPI DI COMPOSIZIONI



SCHEDA TECNICA

Dimensioni&Modelli

Le cementine sono prodotte a mano, una ad una, dunque è possibile richiedere variazioni di colore senza costi aggiuntivi e realizzare modelli su progetto.

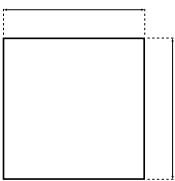
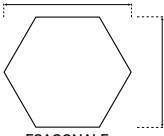
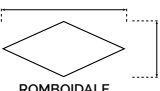


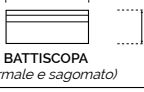

Lo spessore delle cementine é di 16mm. ma su richiesta possono essere realizzate con spessori fino a 14mm.

Con un trattamento adatto (idrorepellente e antimacchia) le cementine possono essere posate in cucina, in contatto diretto con l'acqua e all'esterno, a pavimento.

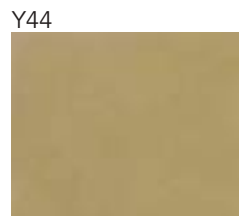
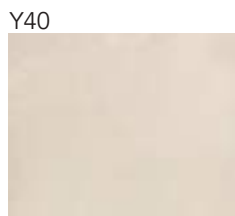
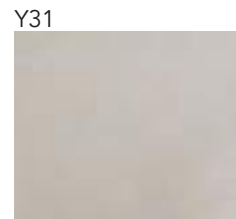
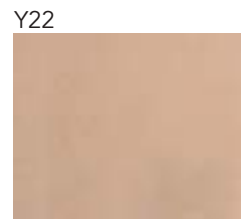
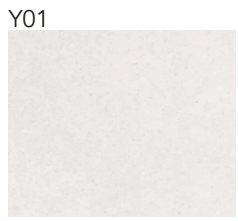
Come si evince dal nostro listino, il prezzo delle cementine varia in base al numero dei colori ed alle misure.

Si effettuano due modalità d'ordine (in base ai mq e i tempi di consegna):

- 1) La pronta consegna: si riferisce alle cementine pronte presso il nostro deposito con consegna entro 4/7 giorni lavorativi.
- 2) Produzione su misura: i tempi di consegna variano dai 30 ai 60 giorni secondo il trasporto concordato. Abbiamo la modalità "trasporto express e produzione prioritaria" con consegna entro 30 giorni dall'ordine.

Modello	Dimensioni (cm)	Colori/Disegni
 QUADRATO	7x7	Colori in tinta unita (disegni su richiesta)
	10x10	Colori in tinta unita (disegni su richiesta)
	15x15	A04, C04, C06, C13, F14, S02, O05
	17,5x17,5	Colori in tinta unita (disegni su richiesta)
	20x20	Disegni catalogo (colori personalizzabili)
	25x25	Colori in tinta unita (disegni su richiesta)
	30x30	Colori in tinta unita (disegni su richiesta)
 ESAGONALE	15x17,5 (lato=8,5)	Colori in tinta unita e modello bicolore <i>coin</i>
	20x23 (lato=11,5)	Disegni catalogo
	25x29 (lato=14,5)	Colori in tinta unita (disegni su richiesta)
 ROMBOIDALE	16x27,5 (lato=16)	Colori in tinta unita (disegni su richiesta)
	22x39,5 (lato=23)	Colori in tinta unita e disegni catalogo
 OTTOGONALE	20x20 (lato=7, lato=10)	Colori in tinta unita (disegni su richiesta)
 RETTANGOLARE	5x20	Colori in tinta unita e disegni catalogo
	10x20	Colori in tinta unita e disegni catalogo
 BATTISCOPA (normale e sagomato)	10x20	Colori in tinta unita e disegni catalogo
 BORDURE (quadrate e rettangolari)	20x20	Colori in tinta unita e disegni catalogo
	10x20	Colori in tinta unita e disegni catalogo

PALETTE COLORI BASE Y



PALETTE COLORI BASE **A**







POSA IN OPERA

SOTTOFONDO

Il massetto deve essere realizzato ad una quota inferiore di 18/20 mm circa dal piano finito per la posa con collanti deformabili ad alte prestazioni tipo H40 o similari.

Il sottofondo deve essere totalmente asciutto e pulito. L'evaporazione dell'umidità residua nel massetto può causare delle efflorescenze o macchie sulla superficie delle cementine.

Nel caso di un sottofondo particolarmente umido e di difficile asciugatura si consiglia l'uso di un protettivo pre-posa antirisalita da applicare sul retro delle cementine o l'utilizzo di una barriera al vapore sul massetto.

POSA

Eseguire la posa a colla cementizia fissando le piastrelle sul sottofondo mediante la semplice pressione delle mani evitando di martellare. La colla dovrà essere applicata sia sul retro della mattonella che sul fondo in maniera uniforme tramite spatola dentata, avendo cura di lasciare uno spazio di 2 mm tra le stesse. Prima della posa è possibile utilizzare un protettivo per facilitare le operazioni di fugatura e ripulitura successive.

STUCCATURA

Utilizzare un trattamento pre stuccatura. Se non è stato utilizzato è indispensabile bagnare bene il pavimento per ridurre l'assorbimento del sigillante. Rimuovere gli eccessi immediatamente con straccio umido o spugna. Le fughe dovranno essere di 1,5/2,0 mm circa e lo stucco liquido per penetrare in profondità. Il pavimento dovrà essere perfettamente livellato, non è possibile levigare successivamente le piastrelle. Eventuali macchie o eccessi di sigillante dovranno essere rimosse prima possibile con abbondante acqua e/o con spugnette abrasive tipo Scotch-Brite. Si consiglia di stuccare 5/6 mq alla volta e ripulire subito. Per macchie persistenti utilizzare carta abrasiva 600 e ripassare successivamente con grana 1000. Per la pulizia finale prima del trattamento effettuare un lavaggio con uno straccio o monospazzola ed un detergente neutro. Sciacquare accuratamente con abbondante acqua.

TRATTAMENTO

Prima di eseguire qualsiasi trattamento di protezione a solvente, il pavimento deve essere totalmente asciutto e pulito. Un trattamento precoce potrebbe bloccare l'evaporazione dell'umidità residua nel pavimento e causare delle macchie sulla superficie.

Effettuare un primo trattamento idrorepellente di profondità mediante applicazione di due mani di idrorepellente e dopo un antimacchia.

Per la finitura e ravvivare i colori si possono usare delle cere liquide o in pasta lucide o satinare.

MANUTENZIONE

Per la pulizia ordinaria si consiglia l'uso di un sapone neutro tipo sapone di Marsiglia o DETERGON evitando detergenti acidi o particolarmente aggressivi e passare periodicamente detergenti a cera o prodotti simili senza eccedere nell'uso.

Ogni 2/3 mesi, effettuare la manutenzione con la cera denominata LOOKING anche diluita in acqua, per il ripristino dello strato di cera.

Per rimuovere macchie particolarmente resistenti utilizzare una spugnetta abrasiva tipo Scotch-Brite e un detergente non acido.

Per condizioni speciali come locali pubblici o problemi di posa chiamateci.



+39-06-83087241

+39-3922118502

Showroom

Via Anicio Paolino, 27 - 00178 Roma
dal Lunedì al Venerdì: 9:00/13:00 - 14:00/18:00
Sabato su appuntamento

www.lecementine.it
office@lecementine.it

www.tadelaktitalia.it
info@tadelaktitalia.it